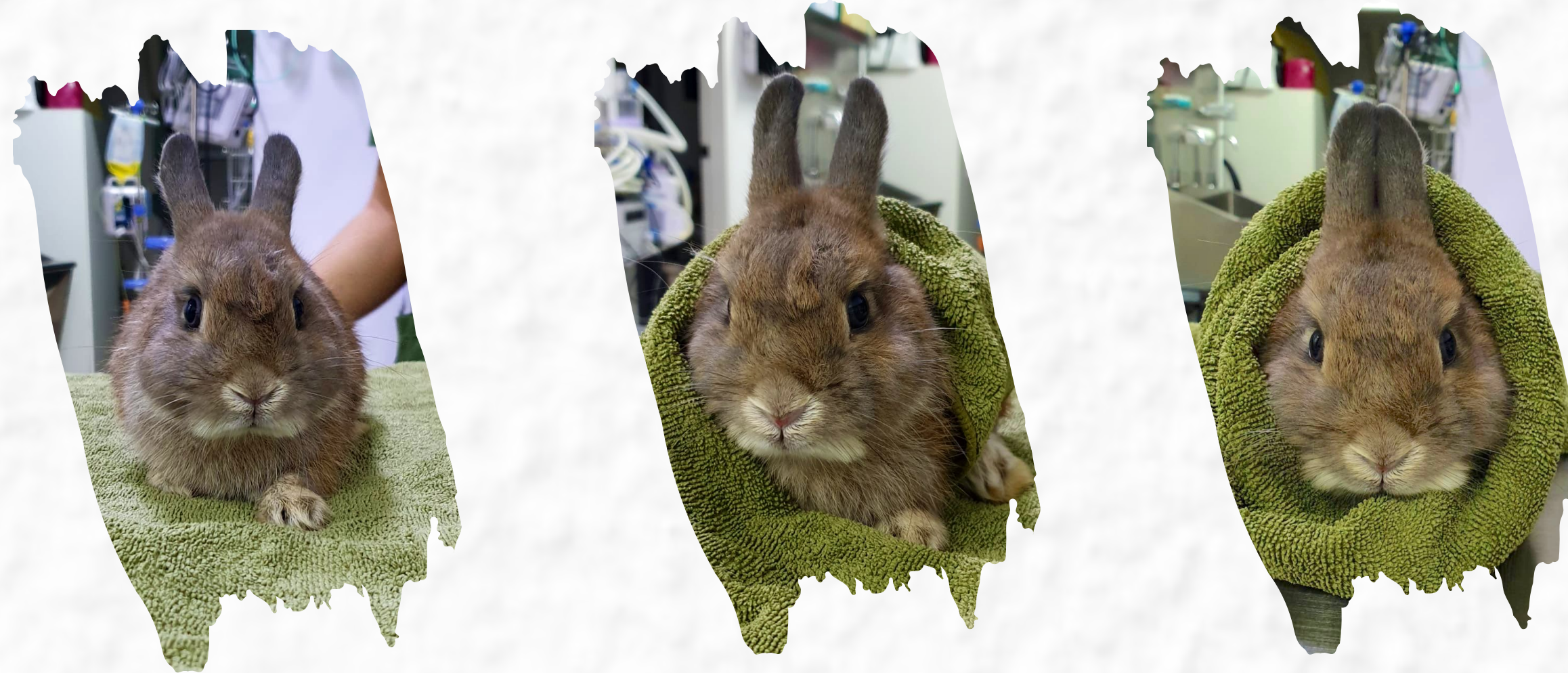


## WHAT TO TAKE NOTE OF:

- 1) **Safety first.** If you're not confident of keeping your pet still, try wrapping her with a towel to keep her snug and calm.
- 2) **Go nice and slow.** Do not rush.
- 3) If she tends to spit the liquid out, try using your finger to tickle her under the chin gently. This may encourage her to swallow.
- 4) **Be ready to get help** if you can't manage and ask your vet to show you the proper techniques for syringe-feeding.
- 5) Always make **soft, smooth movements** and don't 'fight' the rabbit. The slower and gentler you are, the less your rabbit will resist you.

**\*Note:** If syringe-feeding is not done properly, your pet may inhale the liquid and that can lead to pneumonia or even choking. So take your time and feed a small amount each time.

## HOW TO MAKE A HERB(IVORE) BURRITO:



- Lay a towel under your pet (not too big and not too thick).
- She should be standing on the towel.
- Bring the front of the towel up around the base of her neck to ensure full restraint of her front limbs.
- Bring one side flap in and over her shoulders and tuck it securely under her torso.
- Bring the other side flap in and tuck it securely under her torso.
- Tuck the remaining towel in to secure her and prevent her from wriggling backwards out of the towel.

# HOW TO SYRINGE-FEED SMALL HERBIVORES

## STUFF YOU'LL NEED:

1. Feeding formula
2. Water
3. Feeding syringes
4. Baby's bib and/or towel
5. Paper towels

## STEP 1: POSITIONING



- Make sure all your equipment are within reach.
- Place your pet securely on a table, either stand or sit beside/behind her.

## STEP 2: HOLDING



- Gently but firmly, grasp her head.
- Place your index finger directly under her chin and your thumb at the base of her skull.
- Place the rest of your fingers on her chest to prevent further movement.

## STEP 3: INSERTING



- Lower your head to make sure you can see her mouth and monitor her chewing. If possible, get someone to help you.
- Approach from the side by gently inserting the syringe into the gap between her incisors and cheek teeth (area circled in yellow). DO NOT push the syringe down towards her throat.

## STEP 4: FEEDING



- Start with just 0.5ml of formula for the first mouthful.
- Then remove the syringe to let your pet chew/swallow.
- **\*Stop feeding if your pet is vocalising to prevent risk of inhalation. Vocalising could mean your rabbit is in pain and/or feeling very distressed. Stop immediately, and allow her to calm down. Evaluate her breathing.**
- **\*\*Never feed more than 1ml per mouthful.**
- After the meal, you can follow up with syringe-feeding 5-10ml of water SLOWLY, 1ml at a time.